

Attachment to Item 7.4

**Traffic Management Committee Meeting
5 April 2011**

Black Spot Project – Elizabeth Street and Tyrell Street Intersection, Nedlands

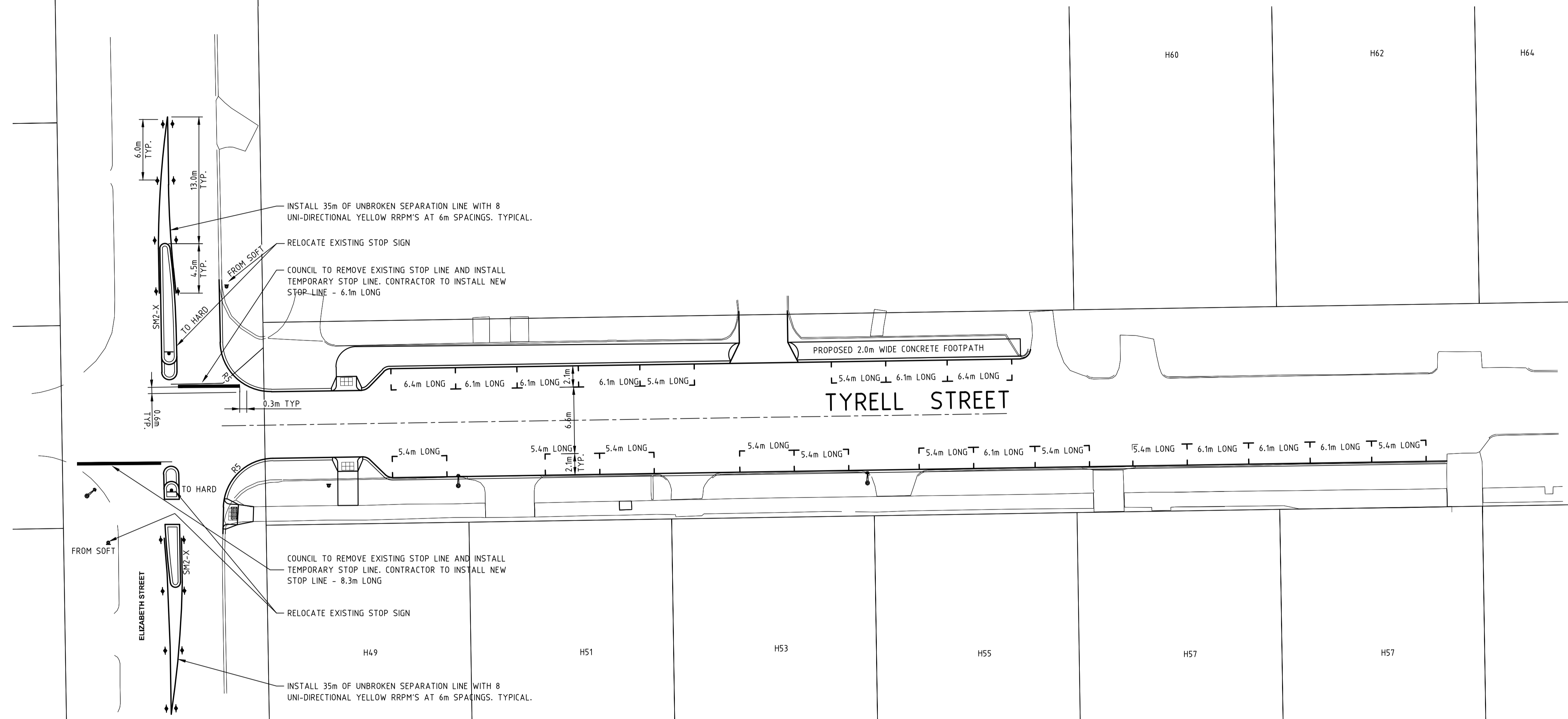
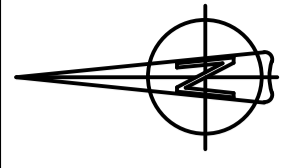


The City of Nedlands accepts no responsibility for the accuracy of this image or the results of any actions taken when using this image.

Tuesday, March 29, 2011

1:500





NOTE: ALL LINEMARKING TO BE WHITE UNLESS NOTED OTHERWISE

LEGEND

— PROPOSED LINEMARKING

— EXISTING LINEMARKING

NOTE: CONTRACTOR TO PROVIDE

- PVC SLEEVES (150mm) WHERE SIGNS ARE LOCATED WITHIN PAVED AREAS.
- SPOTTING TO MRWA GUIDELINES AT THE PROPOSED POSITIONS OF PAVEMENT MARKINGS.

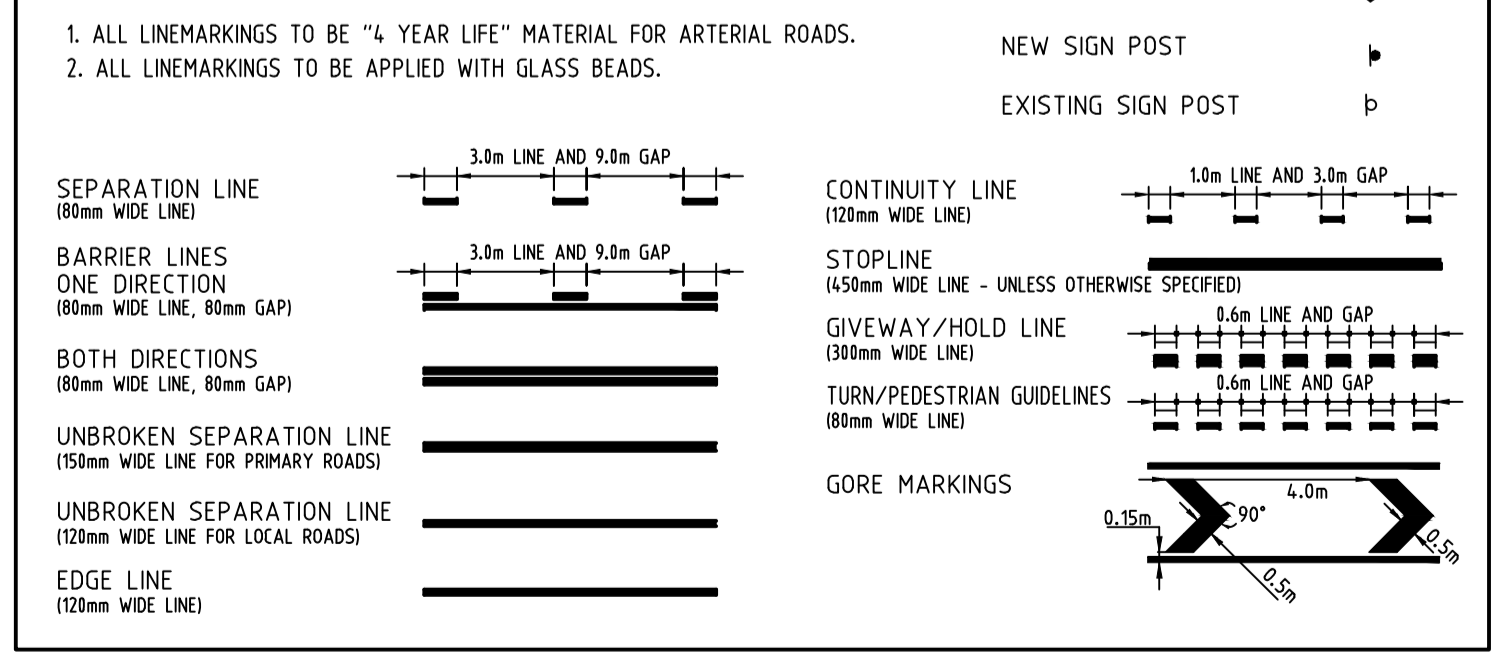
MULTI-LANE ROAD TREATMENT OPTIONS

MOVEMENTS	TREATMENT
Ban on right turns and U-turns	Install double barrier line.
Right turn at select locations	Provide gap in double barrier line.
Right turn permitted along the entire section	Provide 150mm unbroken separation line.

INTERSECTION AND ISLAND APPROACHES ON NON MULTI-LANE ROADS

MOVEMENTS	TREATMENT
Ban on right turns and U-turns	Install double barrier line.
Right turn into driveways	Install unbroken separation line.

ROAD MARKING CONSTRUCTION DETAILS



No.	Revision	Checked	Approved	Date	No.	Revision	Checked	Approved	Date
B	MRWA REVISIONS, ISSUED FOR APPROVAL	ALS	ALS	16.08.10					
A	PRELIMINARY ISSUE FOR COUNCIL REVIEW	ALS	ALS	8.07.10					

NOTE: COPYRIGHT OF THIS DRAWING IS RESERVED BY LAND FOCUS. THIS DRAWING SHALL BE READ IN CONJUNCTION WITH ALL OTHER RELEVANT DRAWINGS RELATING TO OTHER TRADES FOR ACCURATE CO-ORDINATION OF SERVICES. THE CONTRACTOR SHALL BE RESPONSIBLE FOR "SITE CHECKING" ALL DIMENSIONS PRIOR TO COMMENCEMENT OF WORK. THIS DRAWING IS THE PROPERTY OF LAND FOCUS AND SHALL BE RETURNED UPON REQUEST. THIS DRAWING MAY ONLY BE USED FOR THE PURPOSE FOR WHICH IT WAS COMMISSIONED & IN ACCORDANCE WITH THE TERMS OF ENGAGEMENT FOR THE COMMISSION. UNAUTHORISED USE OF THIS DOCUMENT IS PROHIBITED.

Drawing File No.
C10466-C02.DWG

LAND FOCUS
ENGINEERING CONSULTANTS

55 / 229 Adelaide Tce
Perth, Western Australia, 6000
P.O. Box 325, Mount Hawthorn
Perth, Western Australia, 6915

Telephone: (08) 9221-4722
Facsimile: (08) 9221-4755
Mobile: 0402-286-337
E-mail: admin@landfocus.com.au

Scale: 0 2.5 5 10 15
1:250
Half Size 1:500 - SCALE (m)

Drawn: ALS 8JULY10
Designed: ALS 8JULY10
Drafting Check: Design Check
Approved:

Client: NEDLANDS CITY COUNCIL
Job: ELIZABETH/TYRELL ST UPGRADE
Title: LINEMARKING AND SIGNAGE PLAN

Original Size: A1
Drg. No.: C10466-C02
Revision: B

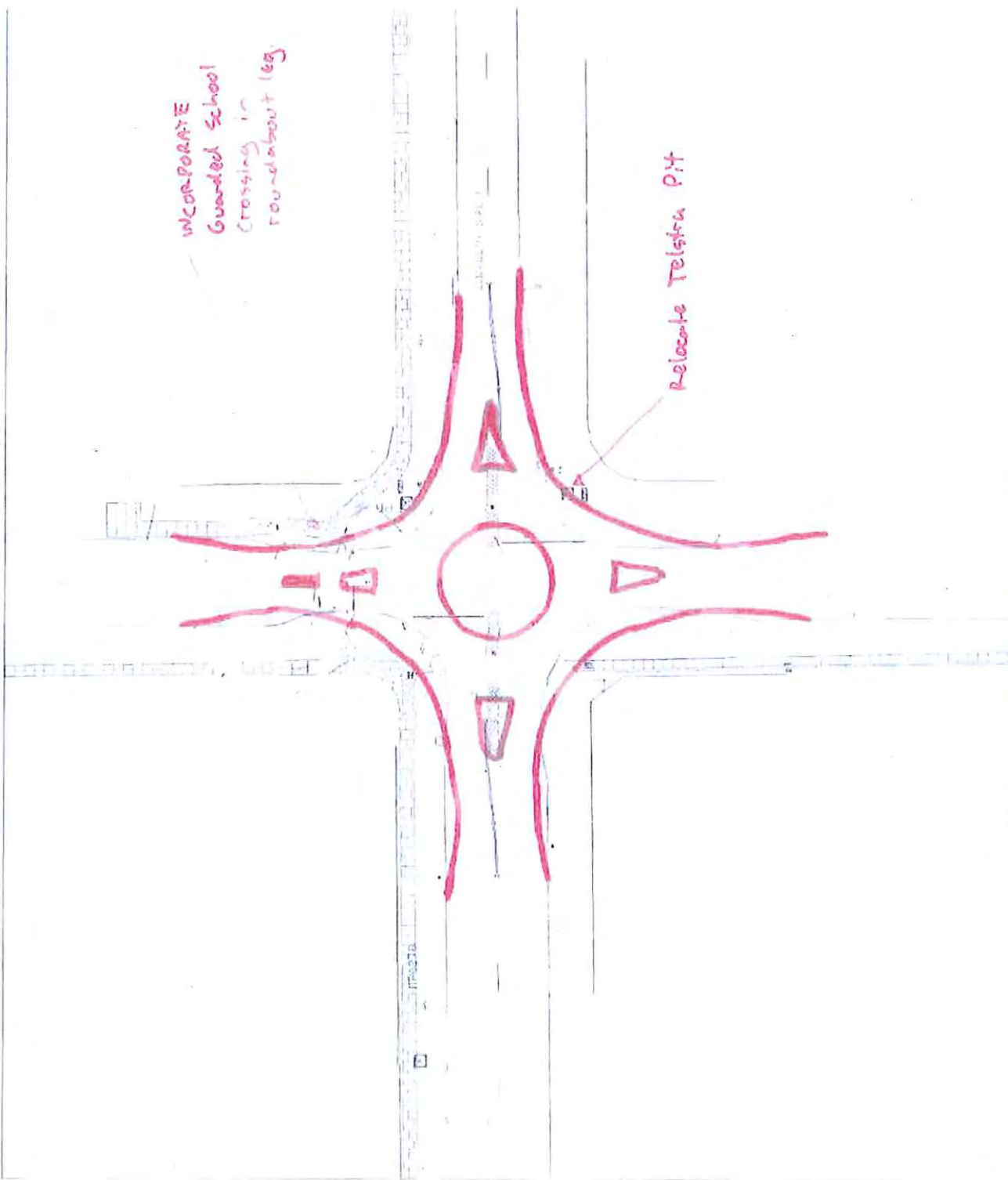
Attachment to Item 7.5

**Traffic Management Committee Meeting
5 April 2011**



Black Spot Project – Elizabeth Street and Bruce Street intersection, Nedlands

INCORPORATE
Guarded School
Crossing in
roundabout leg.

Relocate Telstra Pit

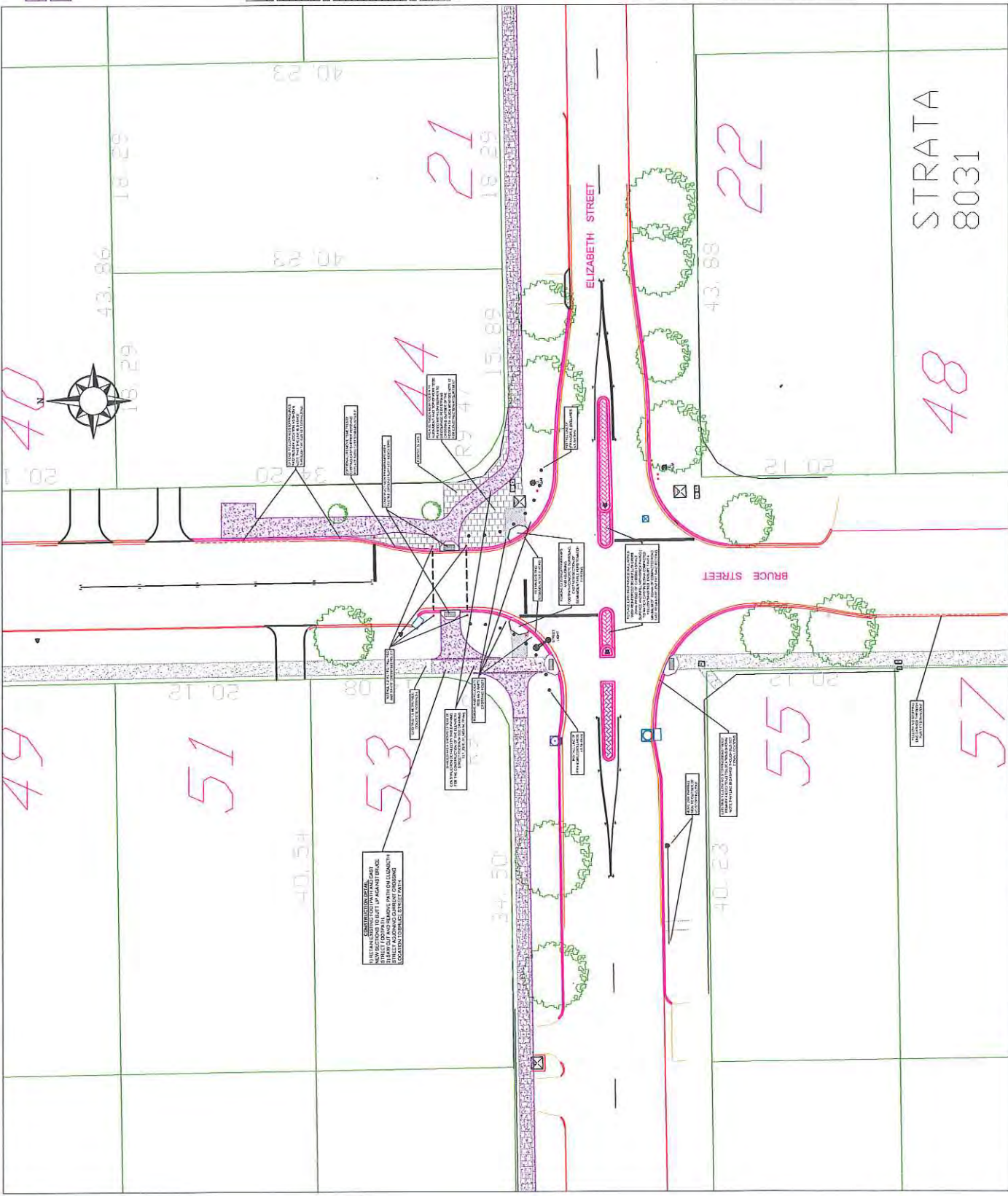


Legend:

-  Proposed in situ cast concrete footpath
-  Remove existing cast concrete

MODIFICATIONS TO THE INTERSECTION OF BRUCE AND ELIZABETH STREETS

REVISIONS	
NO.	DESCRIPTION
1	ISSUED FOR CONSTRUCTION
2	ISSUED FOR CONSTRUCTION
3	ISSUED FOR CONSTRUCTION
4	ISSUED FOR CONSTRUCTION
5	ISSUED FOR CONSTRUCTION
6	ISSUED FOR CONSTRUCTION
7	ISSUED FOR CONSTRUCTION
8	ISSUED FOR CONSTRUCTION
9	ISSUED FOR CONSTRUCTION
10	ISSUED FOR CONSTRUCTION
11	ISSUED FOR CONSTRUCTION
12	ISSUED FOR CONSTRUCTION
13	ISSUED FOR CONSTRUCTION
14	ISSUED FOR CONSTRUCTION
15	ISSUED FOR CONSTRUCTION
16	ISSUED FOR CONSTRUCTION
17	ISSUED FOR CONSTRUCTION
18	ISSUED FOR CONSTRUCTION
19	ISSUED FOR CONSTRUCTION
20	ISSUED FOR CONSTRUCTION
21	ISSUED FOR CONSTRUCTION
22	ISSUED FOR CONSTRUCTION
23	ISSUED FOR CONSTRUCTION
24	ISSUED FOR CONSTRUCTION
25	ISSUED FOR CONSTRUCTION
26	ISSUED FOR CONSTRUCTION
27	ISSUED FOR CONSTRUCTION
28	ISSUED FOR CONSTRUCTION
29	ISSUED FOR CONSTRUCTION
30	ISSUED FOR CONSTRUCTION
31	ISSUED FOR CONSTRUCTION
32	ISSUED FOR CONSTRUCTION
33	ISSUED FOR CONSTRUCTION
34	ISSUED FOR CONSTRUCTION
35	ISSUED FOR CONSTRUCTION
36	ISSUED FOR CONSTRUCTION
37	ISSUED FOR CONSTRUCTION
38	ISSUED FOR CONSTRUCTION
39	ISSUED FOR CONSTRUCTION
40	ISSUED FOR CONSTRUCTION
41	ISSUED FOR CONSTRUCTION
42	ISSUED FOR CONSTRUCTION
43	ISSUED FOR CONSTRUCTION
44	ISSUED FOR CONSTRUCTION
45	ISSUED FOR CONSTRUCTION
46	ISSUED FOR CONSTRUCTION
47	ISSUED FOR CONSTRUCTION
48	ISSUED FOR CONSTRUCTION
49	ISSUED FOR CONSTRUCTION
50	ISSUED FOR CONSTRUCTION
51	ISSUED FOR CONSTRUCTION
52	ISSUED FOR CONSTRUCTION
53	ISSUED FOR CONSTRUCTION
54	ISSUED FOR CONSTRUCTION
55	ISSUED FOR CONSTRUCTION
56	ISSUED FOR CONSTRUCTION
57	ISSUED FOR CONSTRUCTION
58	ISSUED FOR CONSTRUCTION
59	ISSUED FOR CONSTRUCTION
60	ISSUED FOR CONSTRUCTION
61	ISSUED FOR CONSTRUCTION
62	ISSUED FOR CONSTRUCTION
63	ISSUED FOR CONSTRUCTION
64	ISSUED FOR CONSTRUCTION
65	ISSUED FOR CONSTRUCTION
66	ISSUED FOR CONSTRUCTION
67	ISSUED FOR CONSTRUCTION
68	ISSUED FOR CONSTRUCTION
69	ISSUED FOR CONSTRUCTION
70	ISSUED FOR CONSTRUCTION
71	ISSUED FOR CONSTRUCTION
72	ISSUED FOR CONSTRUCTION
73	ISSUED FOR CONSTRUCTION
74	ISSUED FOR CONSTRUCTION
75	ISSUED FOR CONSTRUCTION
76	ISSUED FOR CONSTRUCTION
77	ISSUED FOR CONSTRUCTION
78	ISSUED FOR CONSTRUCTION
79	ISSUED FOR CONSTRUCTION
80	ISSUED FOR CONSTRUCTION
81	ISSUED FOR CONSTRUCTION
82	ISSUED FOR CONSTRUCTION
83	ISSUED FOR CONSTRUCTION
84	ISSUED FOR CONSTRUCTION
85	ISSUED FOR CONSTRUCTION
86	ISSUED FOR CONSTRUCTION
87	ISSUED FOR CONSTRUCTION
88	ISSUED FOR CONSTRUCTION
89	ISSUED FOR CONSTRUCTION
90	ISSUED FOR CONSTRUCTION
91	ISSUED FOR CONSTRUCTION
92	ISSUED FOR CONSTRUCTION
93	ISSUED FOR CONSTRUCTION
94	ISSUED FOR CONSTRUCTION
95	ISSUED FOR CONSTRUCTION
96	ISSUED FOR CONSTRUCTION
97	ISSUED FOR CONSTRUCTION
98	ISSUED FOR CONSTRUCTION
99	ISSUED FOR CONSTRUCTION
100	ISSUED FOR CONSTRUCTION



Notes:

1. Proposed concrete footpath to be constructed at 1.5 metres width with a minimum depth of 100 mm (minimum compressive strength 20 Mpa). Finished surface to be broomed to ensure non-slip properties and construction joints to be formed at 4 metre intervals with expansion joints at 40 metre intervals. Slope of 2% +/- 0.5% U.A.O.
2. For full path construction specifications consult Nedlands document "Footpath Specification.doc"
3. Ensure Traffic Management during construction conforms to Worksafe Standards.
4. Services are shown in their approximate location. Domestic services are not shown. Locate all services before excavation. Provide adequate support for exposed services.
5. Existing verges shall not be disturbed beyond the extent of work.
6. The in of new surface to finish flush with existing surface.
7. Kerbs shall be constructed with compacted limestone base course and finished by boxing out to 200mm and backfilling with compacted limestone base course and finished with 30mm dense graded lateritic asphalt. Edge beams will be installed where laneways are required.
8. Paths shall terminate at laneway entries. The laneway crossovers shall be reconstructed by boxing out to 200mm and backfilling with compacted limestone base course and finished with 30mm dense graded lateritic asphalt. Edge beams will be installed where laneways are required.
9. Non-conforming grass-over ribs to be replaced by City of Nedlands Specification.
10. All fill shall be clean non plastic material free from vegetation and other deleterious material. Fill shall be placed in uniform layers not exceeding 300mm thickness and compacted to a density not less than that of the surrounding indigenous soil.
11. Restore verges, reticulation and crosswalks to their original condition.
12. Any sections of verge to be planted shall be:
 - 1) Planted with the same species as the existing.
 - 2) Be set with the surface 150mm lower than surrounding/bounding borders (footpaths, garden borders, tops of kerb, driveways etc.) to allow for the placement of mulch.
 - 3) Any imported soil to be screened and free of debris.
 - 4) Any trees of 40mm diameter to be retained.
 - 5) Liaise with the Manager, Parks or the parks Project Coordinator for any specific instructions.

Rev	Revision note	Drawn	Checked	Scale	Date	Designed	Checked
		A.J.F		1:200	20/09/2010	A.J.F	A.J.F
A	ISSUED FOR CONSTRUCTION						APPROVED
 City of Nedlands COUNCIL CHAMBER							



The City of Nedlands accepts no responsibility for the accuracy of this image or the results of any actions taken when using this image.

Tuesday, March 29, 2011

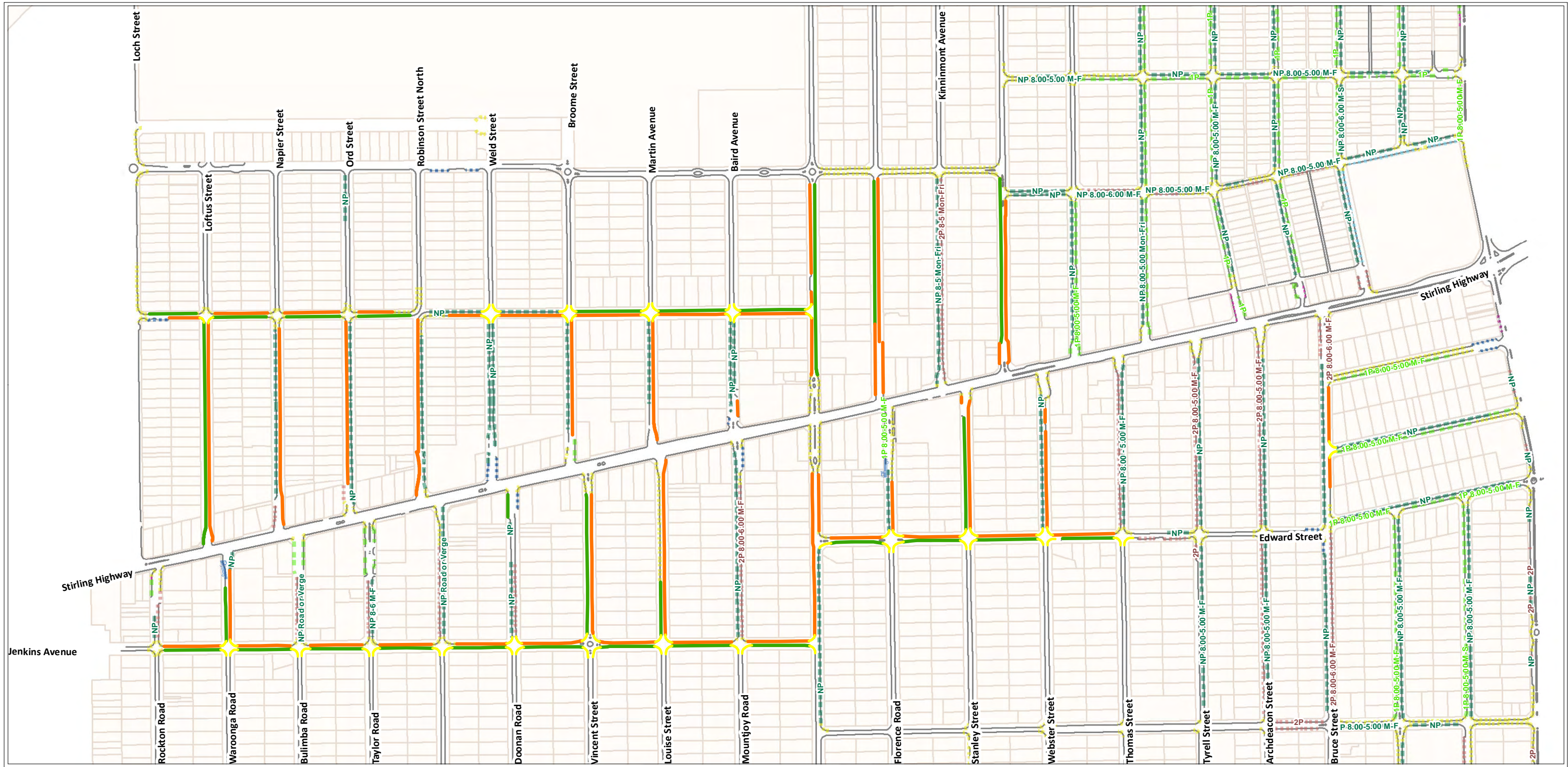
1:500



Attachment to Item 7.6

**Traffic Management Committee Meeting
5 April 2011**

Proposed Parking Restrictions on Stirling Highway, Nedlands
(Referred from the meeting on 1 March 2011)



0 1,250 2,500 5,000 Meters

Proposed Parking Restrictions Stirling Highway Precinct

Existing Parking Restrictions

- 5 mins
- 0.25P
- 0.5P
- No Stopping
- No Parking
- 1P
- 2P
- 4P

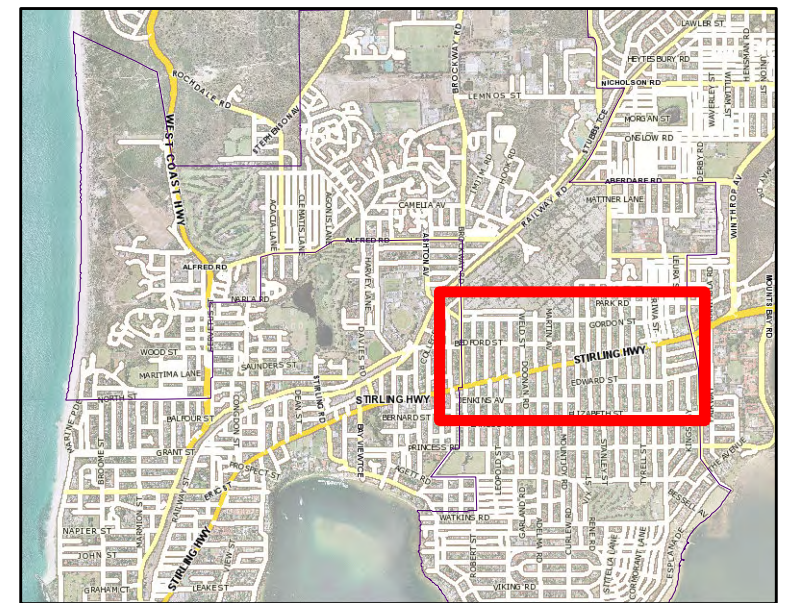
Loading Zone

Proposed Parking Restrictions

- 2P 8.00 - 5.00 Mon - Fri
- No Parking 8.00 - 5.00 Mon - Fri
- No Standing

Date Saved: 28/03/2011 4:54:00 PM

Path: P:\Maps\2011\Ned_20_11.mxd
Trim: PLAN/852



Attachment to Item 7.7

**Traffic Management Committee Meeting
5 April 2011**

Parking Restrictions on Webster Street, Nedlands

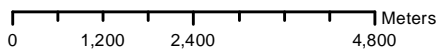
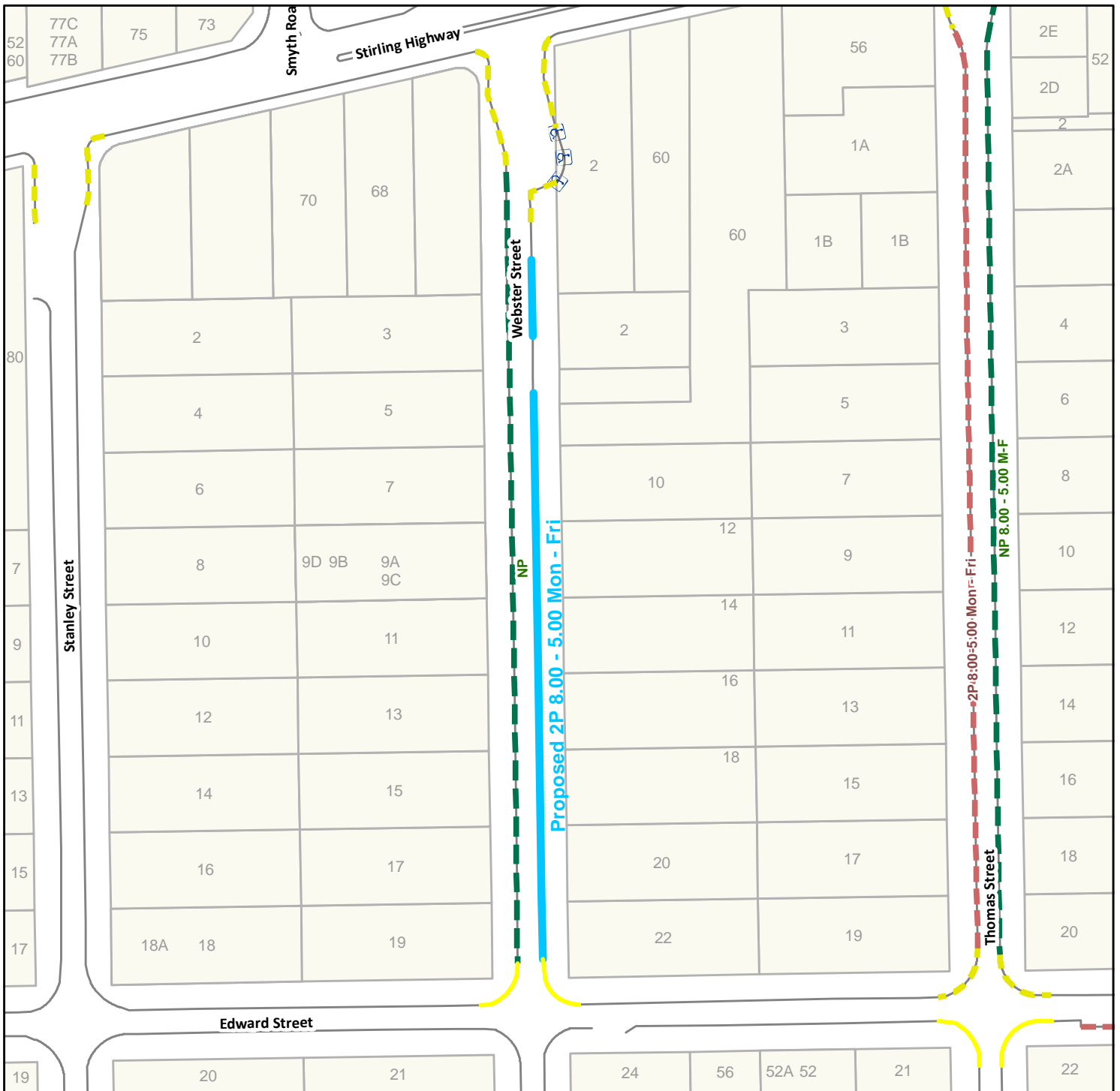


The City of Nedlands accepts no responsibility for the accuracy of this image or the results of any actions taken when using this image.

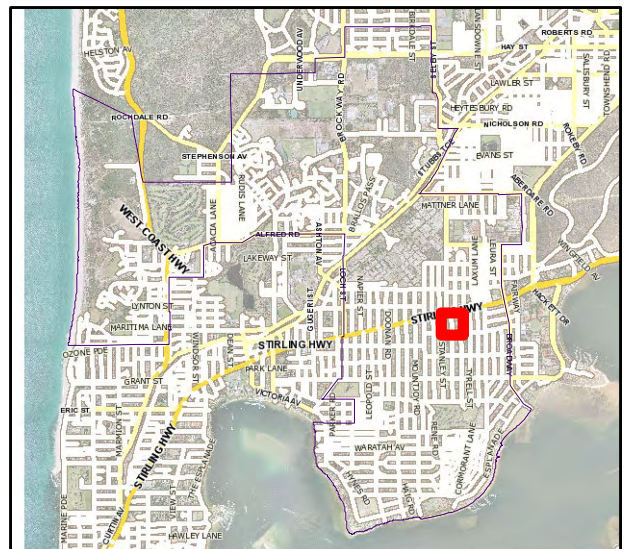
Tuesday, 29 March 2011

1:1250





Proposed Parking Webster Street, Nedlands



Enquiries: Luke Marsden 9273 3500
Our Reference: M11/4140

1 March 2011

Occupier
xx Webster St
NEDLANDS WA 6009

Dear Resident

Proposed parking restrictions on Webster Street, Nedlands

To address long term parking and increase the amenity along Webster Street, the City of Nedlands is proposing to implement timed parking restrictions along Webster Street, between Edward Street and Stirling Highway, Nedlands.

What the work entails

The works will include installation of signs for 2P parking between 8.00 am and 5.00 pm Monday to Friday along the eastern side of the street, as shown in the attached map.

Who can I contact?

If you have any queries regarding these proposed parking restrictions or would like more information, please contact the City's Parking Strategy Coordinator, Luke Marsden on 9273 3500.

How to provide feedback

Your comments on the proposed parking restrictions are welcome and can be made on the attached feedback form. Please return the completed forms to the City by 4.00 pm Tuesday, 15 March 2011.

This feedback will be presented to the City's Traffic Management Committee for consideration.

Yours sincerely

Luke Marsden
Parking Strategy Coordinator

Enc Map showing proposed parking restrictions
 Feedback form