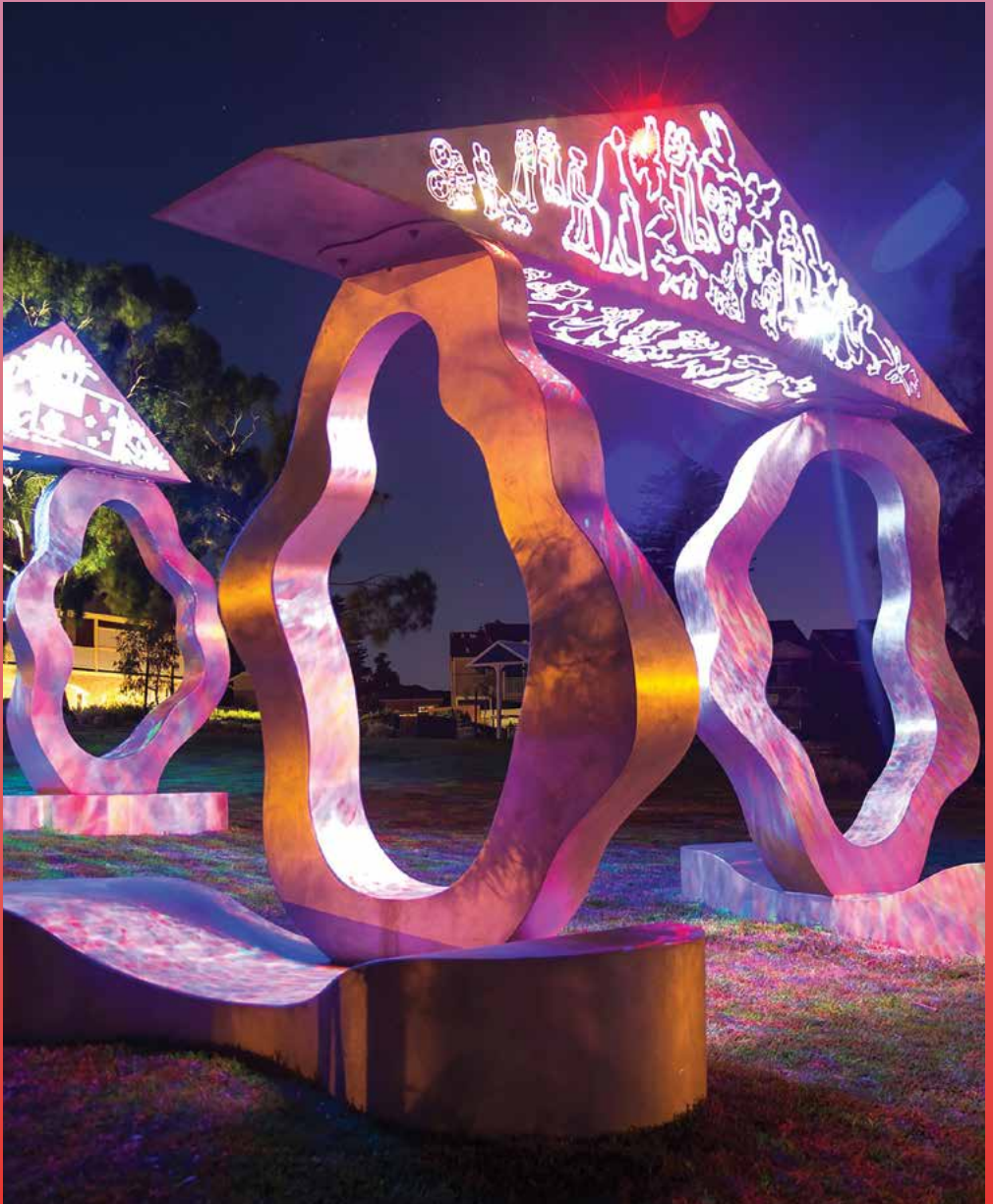


City of Nedlands

Public Art Guide – 2020

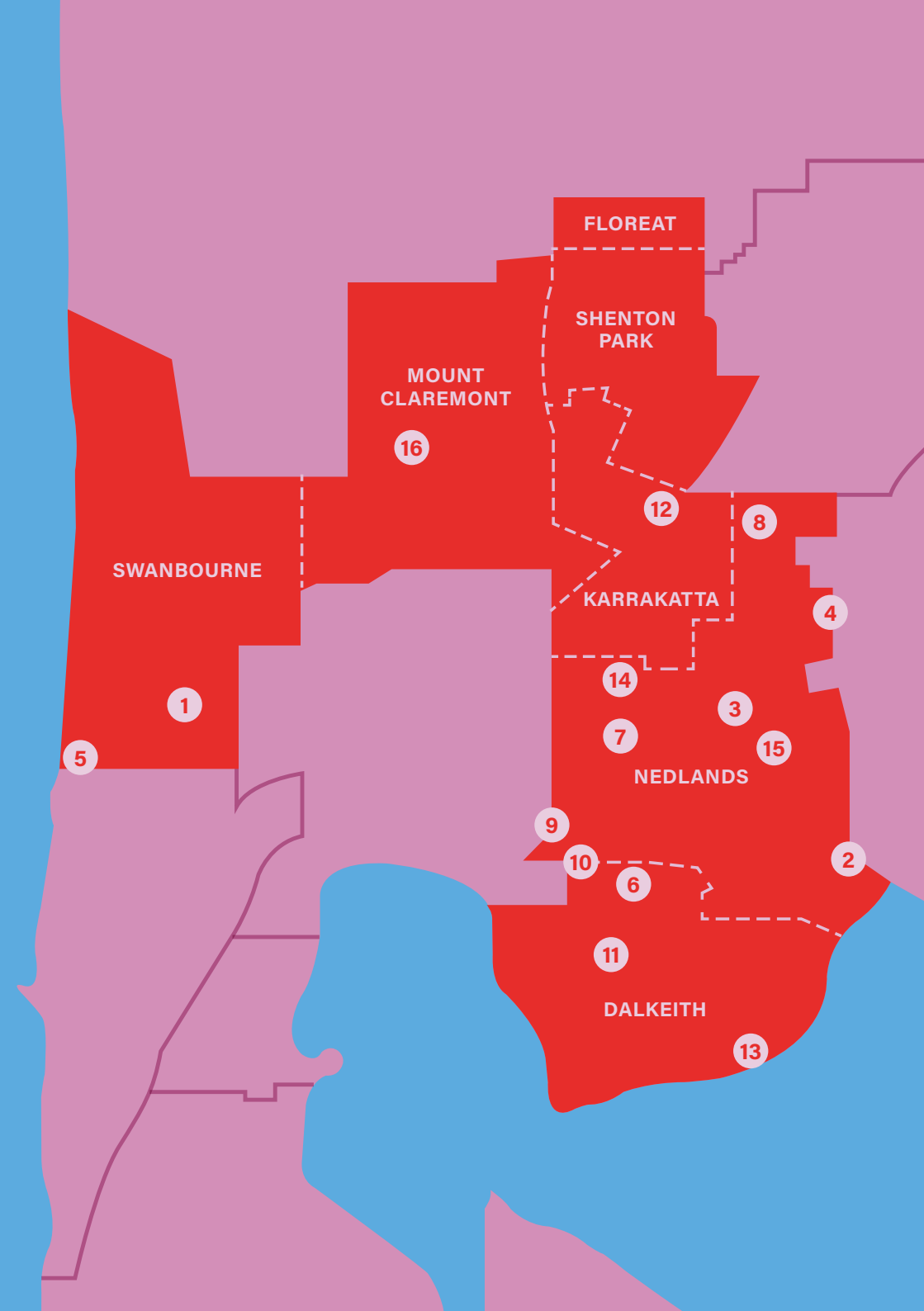


The City of Nedlands is home to many fine examples of public art. A significant number of these works were donated to the City by the Nedlands Cultural and Community Society, while others have been commissioned or purchased by Council. Created by significant artists, these artworks express local identity, strengthen a shared sense of local community, and enrich the experience of living in and visiting this beautiful City.

This Public Art Guide was initiated by Council's Public Art Committee, to celebrate 20 years of art in public spaces in the City of Nedlands.

LEGEND

1. Allen Park Interpretive Signage
2. Asteroid
3. 6009
4. Boat Story
5. Feathers
6. A Walk in the Park
7. Trolley Poles
8. Snapshots of Lupin Hill
9. Group of Little People
10. The Odd Couple
11. Burnside Spit, Hall Mark & Outer Dolphin
12. Grandis Leaf
13. Fisher Boy
14. Loyalty
15. Inspired by Rosie
16. Windows into the Past

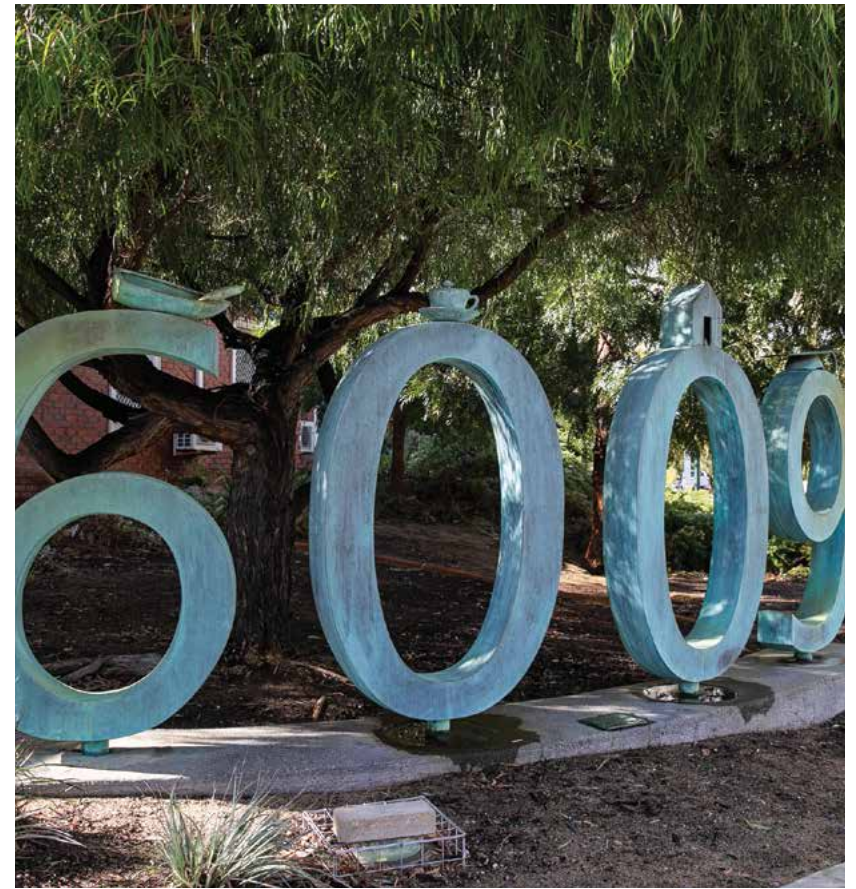




Allen Park Interpretive Signs
by David Kelsall
Allen Park
118 Kirkwood Rd, Swanbourne
2000



Asteroid
by Rick Vermey
Broadway & the Avenue,
Nedlands
2001



6009
by Anne Neil & Steve Tepper
Corner Stirling Hwy &
Smyth Rd, Nedlands
2003



The Boat Story
by Claire Bailey
Hampden Rd, Nedlands
2003



Feathers
by Anne Neil
Corner North St &
Marine Pde, Swanbourne
2004





A Walk in the Park
by Judith Forrest
Masons Gardens
Corner Adelma St &
Melvista Ave, Dalkeith
2005





A Walk in the Park
by Judith Forrest
Masons Gardens
Corner Adelpa St &
Melvista Ave, Dalkeith
2005



A Walk in the Park
by Judith Forrest
Masons Gardens
Corner Adelma St &
Melvista Ave, Dalkeith
2005



A Walk in the Park
by Judith Forrest
Masons Gardens
Corner Adelpa St &
Melvista Ave, Dalkeith
2005





A Walk in the Park
by Judith Forrest
Masons Gardens
Corner Adelma St &
Melvista Ave, Dalkeith
2005





Trolley Pole Banners

by Tony Pankiw
Stirling Hwy from Mountjoy Rd
to Loftus St, Nedlands
2006



Trolley Pole Banners

by Tony Pankiw
Stirling Hwy from Mountjoy Rd
to Loftus St, Nedlands
2006



Snapshots of Lupin Hill
by Judith Forrest
Dot Bennett Park
Aberdare Rd, Nedlands
2006



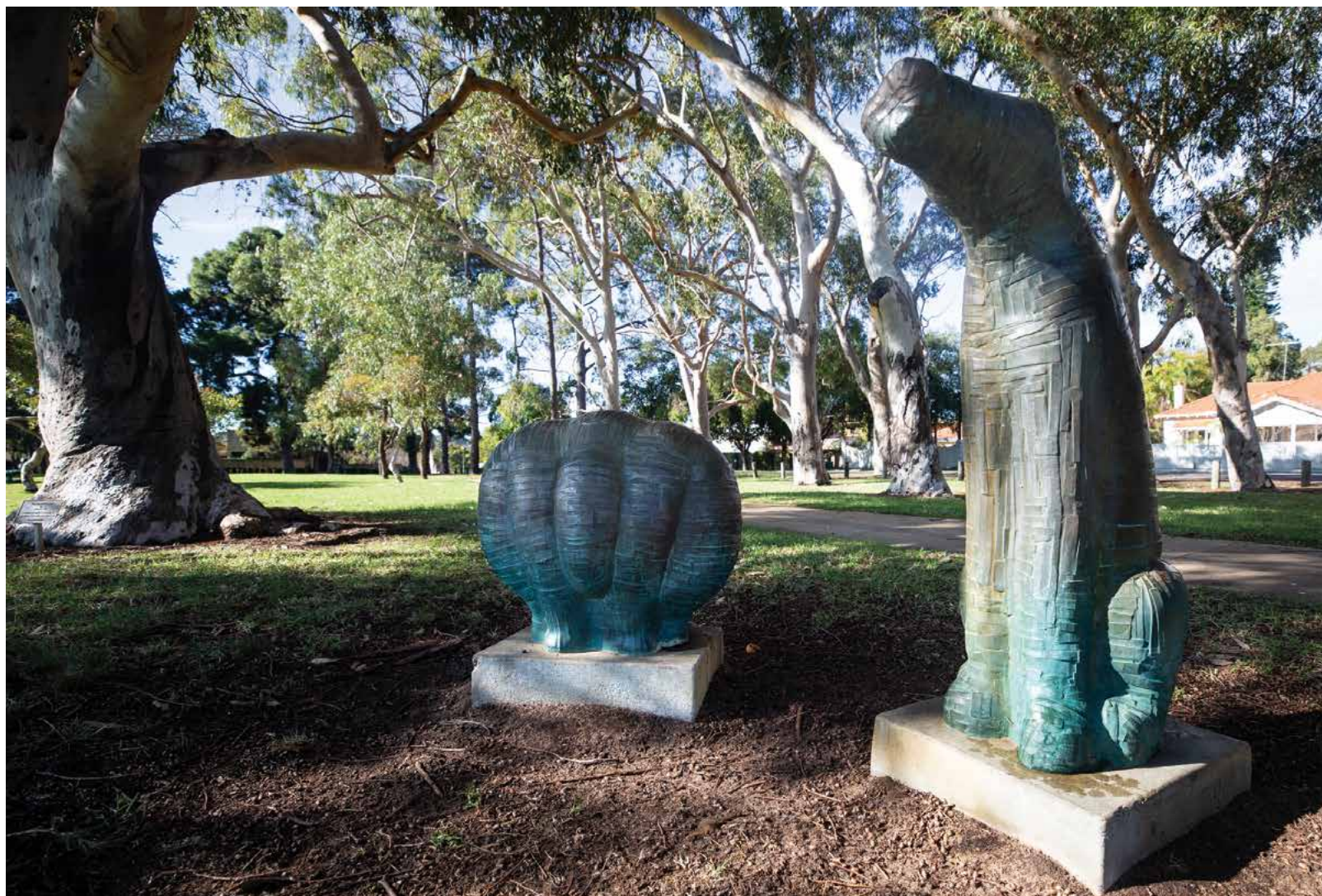
Snapshots of Lupin Hill
by Judith Forrest
Dot Bennett Park
Aberdare Rd, Nedlands
2006



Group of Little People

by Richie Kuhaupt
College Park
Melvista Ave &
Stone Rd, Nedlands
2008





The Odd Couple
by Susan Flavell
College Park
Melvista Ave &
Stone Rd, Nedlands
2008



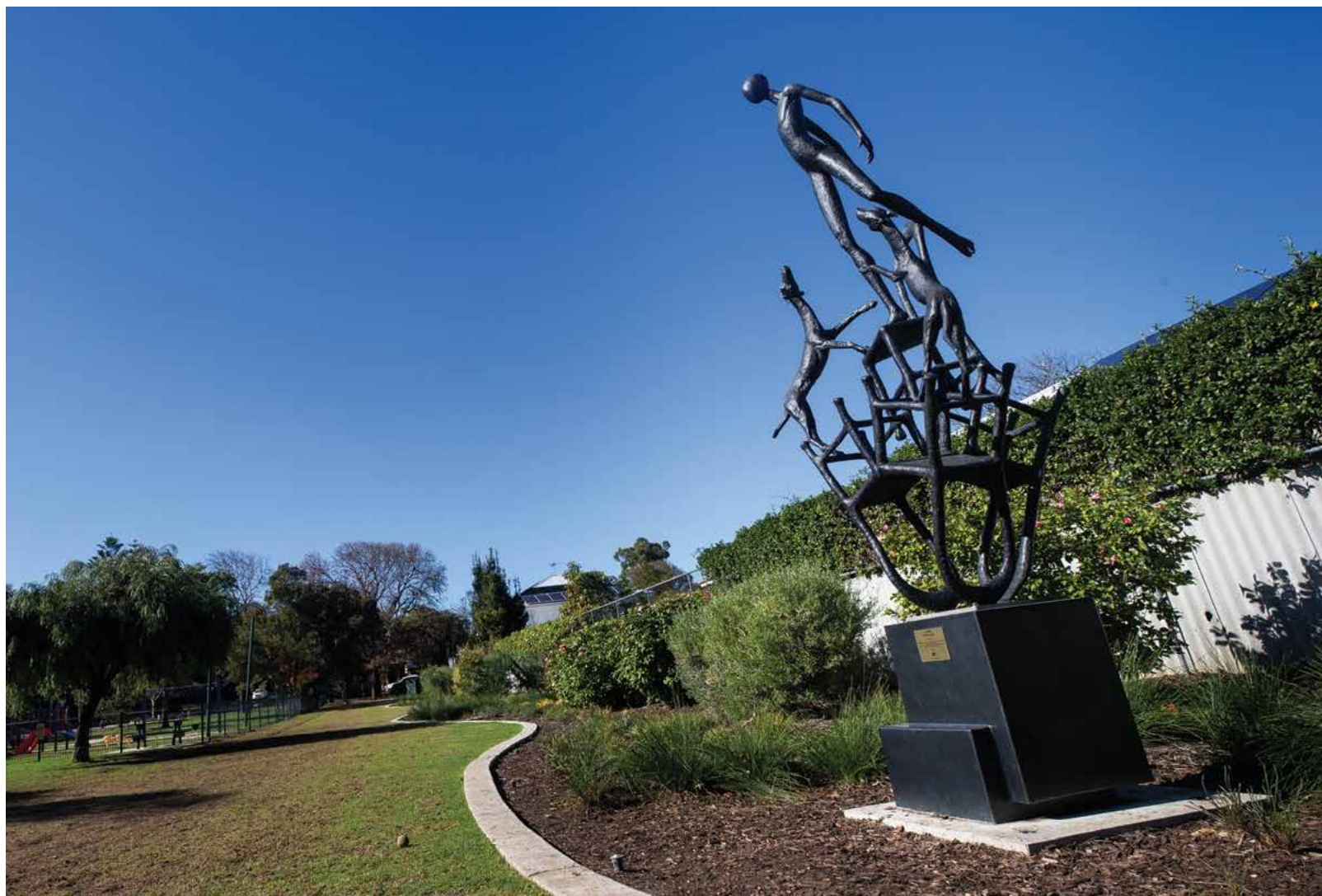
**Burnside Spit, Hall Mark
& Outer Dolphin**
by Tony Jones
Genesta Park
Waratah Ave, Dalkeith
2010



Grandis Leaf
by Leanne Bray
Nagal Pass, near Stubbs Tce,
Shenton Park
2016



Fisher Boy
by Alanna Randles-Freeman
Jo Wheatley All Abilities Play Space,
Beaton Park
Esplanade, Dalkeith
2018



Loyalty
by Ayad Alqaragholti
Carrington Park
Carrington St, Nedlands
2019



Inspired by Rosie
by Tania Spencer
Tresillian Arts Centre
21 Tyrell St, Nedlands
2019



Windows into the Past
by Tony Pankiw
Annie Dorrington Park
St Johns Wood Blvd, Mt Claremont
2020



City of Nedlands
71 Stirling Hwy Nedlands WA 6009
nedlands.wa.gov.au



This publication is available in
alternative formats on request.